



NOTES FROM THE PRESIDENT'S DESK

February 15, 2013 Volume 12 Issue 9

What a great start to the New Year! We had at least 35 members in attendance at our January meeting and I would like to thank Dr. Terry Panhorst for his excellent presentation on mineral twinning. Terry's programs are always very interesting, well presented and draw a crowd! Speaking of drawing a crowd, the NMGMS display is set up and "running" over at the Oren Dunn Museum in Tupelo. We are all hoping that this display and our Geology Day event to be held there on Feb. 16th, will draw the public out to the museum, thus not only helping to bring our organization and its interests more exposure, but also to help promote the museum as a valuable community resource. When Rae Mathis emailed me last summer asking if NMGMS would be interested in setting up a display, little did I know that we would be putting together a collection that has filled up six display cases, two of which are quite large! Thanks to the efforts of fellow NMGMS club members, MGMS members and the Mississippi Museum of Natural Science, our display consists of cases covering nearly all of the aspects of the state's geology and of our organization's interests and expertise. The large fossil case contains specimens from each of the geologic periods that have exposure within the state of Mississippi, from the "Ice Age" down thru the "Age of the Dinosaurs", to the "Coal Age" and beyond. The rock and mineral case contains a depiction of a "dry creek bed", containing many of the specimens that you might find in the state when enjoying the great outdoors. Have you ever walked along and picked up an interesting rock and wondered, "What is this"? Hopefully, the rock and mineral case will show you the answer! There are also display cases dedicated to the lapidary arts with a wide variety of items made by NMGMS members. These displays show all of the different techniques that members have done and their finished pieces, from beadwork and faceting, to gemtrees and more.

I'd like to thank all of the museum personnel, especially Janice Anthony and Rae Mathis for their efforts in helping us to bring this display to fruition. They went the extra mile in providing us with cases, stands, photos, printing, making labels and especially in bringing NMGMS and this display to the attention of the local media. Through everyone's efforts, we are hoping that the Tupelo community will come out and enjoy what they see! Through this display, we are hoping to show the community that Mississippi really has a rich geologic history "written in stone", if one will only take the time to take a closer look at what's around them. Hopefully, everyone who comes out to the museum will learn something new and will discover a new or renewed enthusiasm for the extraordinary world of rocks, minerals and fossils. Needless to say, Mississippi does indeed possess an incredibly interesting array of rocks and fossils and its geologic history is both exciting to learn about and interesting to look at. After all, it's not just another pretty rock!

NANCY ROBERTS



Nancy presenting
Brittani Junior
Rockhound of the Year
award.
Photo Jim Roberts

A NMGMS display at Oren Dunn Museum.

February 16, 2013
Oren Dunn Museum Tupelo
10 to 3p.m.
"Geology Day"



What's Inside

Meeting Minutes p2

Calendar
Guess What It Is
Announcements p3

Old Bones p4

Bead Soup p6

Rockheads p7

Meeting Program
Crossword p8

**Application
form is attached
to the end of
The Nugget**

NMGMS Meeting Minutes

February 15, 2013



Pledge of Allegiance to the Flag was given by Nancy Roberts, Justin Hobart and Peshani Herath

The minutes of the Dec. meeting was approved as printed in the Nugget.

Treasurer's Report: Closing Balance as of today: \$1780.65.

Review of Committee's:

Field Trips: The first outdoor field trip for 2013 will be for Mississippian fossils on Saturday, Jan. 26th at 9a.m. (See the handout or watch your emails for announcement and directions.)

A field trip to the Park Hills area of MO is being set up for March 8-10th 2013. We will be collecting drussy quartz specimens and also touring the lead mining area and museum. Everyone was reminded to check out the Lodestar for the DMC field trips, since we can attend these. http://www.amfed.org/sfms/lodestar_newsletter.html

Publicity: (Bob Reinhaus) Our Museum display was advertised in the Jan. 17th issue of the Courier. A copy of the article was shared with the group.

Membership: (Ann Byzet) Members were reminded that dues need to be paid as soon as possible, so the 2013 membership roster can be completed and to keep your name on the email list. Dues are \$12 per person and \$20 per family. As of today there are 30 adult members.

Hospitality:

February refreshments will be provided by John Byzet and Rebecca Vallarian March refreshments will be provided by Robert Langford, Justin Hobart and Peshani Herath. The club birthday cake will be provided by John and Ann Byzet.

Website: (John Byzet) Website has been updated.... Check us out at www.nmgms.org

Newsletter: (Dana Jones) A 2012 issue of The Nugget, along with a few articles and features from other 2012 issues will be submitted to the SFMS bulletin competition. Entries are due in by Feb. 15th. Members were asked to send anything that is for the newsletter to Dana's email at: nuggeteditor@gmail.com

Youth Members: (Dana Jones and Jim Roberts) Volunteers: David Loyd
The Rockheads' geocaching field trip of Dec. 29th was canceled due to freezing temps. They are planning to reschedule the trip for Feb. 2nd. The Junior Rockhound of the Year Award was presented to Andrew Diaz.

Stamps: (Kathy Westbrook) Members are encouraged to save stamps, by cutting them off of the envelope and leaving a half inch margin of paper around the stamp if possible.

Historian: (Susan Curry): Members were reminded to turn in any 2012 club related photos, newspaper articles, show flyers or other memorabilia by the next meeting, so that Susan Curry can finish the yearbook.

If you take photos at any NMGMS event, please print out a few hard copies to submit to Susan for the yearbooks.

Show/Kids Day: (Roger Loyd, Bob Reinhaus, John Byzet and Robert Langford) NMGMS will be hosting a Geology Day, along with scout merit badge classes at the Oren Dunn Museum in Tupelo on Feb. 16, 2013 from 10 until 3p.m. A club table will be set up and the Museum has given permission for the club to sell the grab bags. There will also be a spin & win game.

Safety: (David Loyd) David Loyd has agreed to take on the task of Safety Chairman.

Old Business:

The Club display is set up at the museum and President Nancy Roberts thanked all of the members who came out to help set this up. The Club was given access to a lot more cases and has one dedicated to just the club's lapidary arts. Anyone wishing to show their lapidary work should bring it to the February meeting. The cases can be added to and changed at any time. The Museum also would like to let the display run a lot longer than first agreed upon so that school groups have the opportunity to visit, especially in the spring. At the Geology Day, we will be selling our grab bags, setting up a spin and win game for a nominal fee like 25 cents or so and we can also, weather permitting, set up a fossil/rock "dig" outside or in the train station building. The museum has sand we can use and also a spinner, which they would like to sell! We are going to need lots of little rocks, crystals and shark teeth etc. for the dig, plus some shifters/colanders and little Ziploc bags filled with interesting prizes (fossil, polished stone, crystal, jewelry item, etc.) for the spin and win. Any member wishing to do so is encouraged to sew some more cloth grab bags. We could use some nice specimens to fill these bags. We sell them for the nominal fee of \$3 ea.

New Business:

Our 2013 dues to the Southeast Federation of Mineralogical Societies have been paid \$141.25. Our insurance payment to the federation will be due the end of Feb. There was group discussion regarding insurance issues, i.e. liability waivers for all members and extra insurance. Also discussed was the option of becoming a LLC or 501(c) (3) non-profit organization. Nancy Roberts volunteered to contact the federation insurance company to clarify and verify the clubs coverage. John Byzet volunteered to investigate the requirements for LLC.

2012 Officers

President/Field Trip Chair:
Nancy Roberts
25 Amber Lane
Counce, TN 38326
(731)689-5336
therockhoundlady@yahoo.com

Vice-President:
Roger Lambert
1817 CR 7002
Corinth, MS 38834
(662)286-3750
roger.lambertjr@yahoo.com

Secretary:
Belinda Loyd
7834 Cherry Valley
Southaven, MS 38671
(662)280-1317
loyd_utlady@yahoo.com

Treasurer/Webspinner:
John Byzet
1209 Queensgate Dr
Tupelo, MS 38801
(662)844-9841
wa4jax@comcast.net

Appointees

Historian:
Susan Curry
P.O. Box 61
Mathiston, MS 39752
(662)312-1988
sgcurry@netdoor.com

Stamp Chair:
Kathy Westbrook
2753 HWY 82W
Starkville, MS 39759
(662)324-1601
k-westbrook2010@hotmail.com

Publicity Chair
Bob Reinhaus
150 Wright Lane
Counce, TN 38326
(662)872-0461
gulfssouthern@gmail.com

Membership:
Ann Byzet
1209 Queensgate Dr
Tupelo, MS 38801
(662)844-9841
annbyzet@comcast.com

Hospitality:
Robin Langford
121 Willow Creek Rd
Saltville, MS 38866
(662)869-2278

Nugget Editor:
Dana Jones
1868 HWY 310
Waterford, MS 38685
nuggeteditor@gmail.com

cont p3

Mark Your Calendar

March 16, 2013

Tupelo Library 1-3p.m.
NMGMS 12th
Birthday!! Displays by
membership.

For a list of
rock and
gem shows:
http://
www.amfed.
org/
shows.htm

Rock and
Gem
magazine:
www.rockng
em.com/
showdates

February 16, 2013
Oren Dunn Museum Tupelo
10 to 3p.m.
"Geology Day"

March 16, 2013
Tupelo Library 1-3p.m.
NMGMS 12th Birthday!!
Displays by membership.

April 20, 2013
Tupelo Library 1-3 p.m.
"Amazing Family of Quartz"
Myra Soroczak

May 18, 2013
Tupelo Library 1-3p.m.
"Lampwork Basics"
Dana Jones
Remy Collins

NMGMS Meeting Minutes

The benefit of being a member in SFMS was shared with the group. Membership gives the club voting rights at the annual meetings, the use of slide/video programs, the right to participate in the Federation's sponsored third-party liability insurance program, the rights of their members to participate in D.M.C. field trips, the rights of their members to attend S.F.M.S. sponsored workshops, and receipt of Lodestar (the S.F.M.S. federation newsletter.) It also means NMGMS is a member of the American Federation of Mineralogical Societies and our Rockheads can participate in the FRA badge program. We also have been receiving a mineral newsletter published by Diamond Dan.

Members were asked if there was interest in joining the federation organization ALAA. Following some discussion the consensus of the group the benefits did not warrant joining.

The club has received a memorial donation in honor of Bill Hawkins. A motion was made to purchase books to be donated to the Library in Bill Hawkins' memory. Books will be on the topics of bird watching, faceting and gemstones. All three subjects were dear to Bill. Motion APPROVED and seconded.

Reminder

The Feb. meeting will be at the Tupelo library on **Feb. 9, 2013 from 10 to 1p.m.** We have to be out by 1p.m., as there is another meeting that afternoon. We will be finalizing our Feb. 16th Geology Day and if time permits, the program will be wire wrapping a quartz crystal or interesting stone.

Motion to Adjourn.....

HEAR YE, HEAR YE!

(aka Announcements)

Mea Culpa

Bueller? Bueller? Bueller?

February Has to End Sometime

Please remember the summer issues!
For July- The Jackson Dome Volcano
Since the volcano was active during the Cretaceous:
For August- Cretaceous Mississippi
Of course any idea is welcome.

Contact

nuggeteditor@gmail.com



Image courtesy of Nobu Tamura.
paleoexhibit.blogspot.com/?m=0
VISIT, Leave some comments.



85 million years ago this area was hit by an object the size of a football stadium, and weighing 62 million tons, travelling 40,000 miles an hour.

At the time it was a shallow sea. For many years it was noted that this area was structurally different then the surrounds, the crater was discovered in 1969-70.

Contact

nuggeteditor@gmail.com

37 ichthyosaurs remain in this small area, 38 were found, one was removed to a museum.

The theory I like explaining this is a new theory by Dr Mark McMenamain, that a giant octopus or squid-a Kraken-made a midden of them, and possibly to look like itself.

There are other theories, toxic algae plume, shelf collapsing on them. I want to go with the Kraken.

parks.nv.gov/parks/bi/

www.allaroundnevada.com/ichthyosaurs/



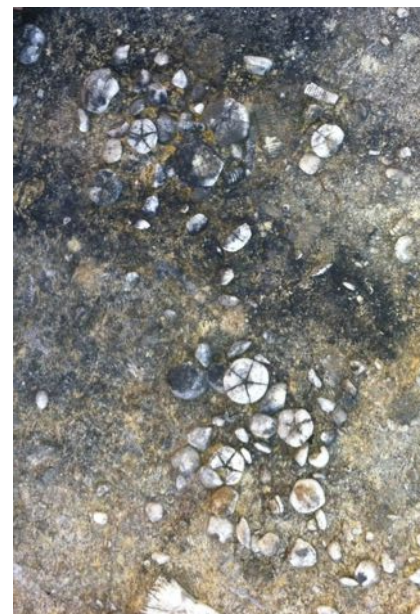
Old Bones

A. dissimilis plates
Pride Mt. Formation -
Colbert Co. AL.

To share knowledge of fossil,
gem, and mineral collecting
and preparation.

Crinophilia

By Gabriel Ward



All Photos Gabriel Ward

The crinoid *Agassizocrinus* is a prevalent genus throughout much of the Late Mississippian. Although it's rare to find complete cups, most people who have collected fossils in the Mississippian have seen the (somewhat) bullet-shaped infrabasal cone.

The infrabasals are the plates in the crinoid cup closest to where the stem attaches in most crinoids. *Agassizocrinus* is a fairly unique crinoid in that the infrabasal plates fuse when the crinoid reaches a certain size or age, and that pinches the stem off of the crinoid.

In fact, sometimes when the infrabasal cone breaks naturally, the part of the stem that was fused off is visible inside.

This awesome adaptation allows it to move to higher energy shoals and bury its cup in the mud, which in turn allows the crinoid to actively compete with the larger crinoids.

Partial Cup
A. sp. Bangor Limestone -
Franklin Co. AL



The larger crinoids have longer stems and are more brittle, so they can't inhabit the high-energy shoals *Agassizocrinus* can, which leaves a lack of feeding competition for *Agassizocrinus*.

When filter feeding, *Agassizocrinus* would have almost the entire cup buried in the mud and have the arms splayed out on the ocean floor.

Although there are a few more crinoids that are able to pinch off their stem, this trait is a mostly unique adaptation that allows the crinoid to effectively compete for food with the larger crinoids.

Complete cup
A. angustus. Bangor Limestone - Franklin Co. AL



Infrabasal cones
A. Longulus,
Bangor Limestone -
Colbert Co. AL



Field Trip



MAL Uno Mas

After leaving the gas station where it might have been said the esteemed editor forced Matthew into covering the first part of the trip, we left for the next site. We met Gabriel Ward, a fellow Crinoid Enthusiast. He shared his knowledge most generously, along with finds he found-unfortunately it's a common trait in our club, if we didn't find it, we didn't want it, but we really liked seeing it.

A few of us went to the road cuts as the sun was going down, I'm not sure how much hunting was done, or how much poking about, talking and laughing, and in some cases just bashing rocks open with our hammer because it's new (this would not have been me. You know. I'd never just wantonly bash rocks open with my new hammer. I didn't find anything by the way.)

Mysterious Alabama Location

On the day of January 26, 2013 we took a field trip to *Somewhere*. The water was down enough to where we could collect a lot better. On this trip many people found several very interesting fossils. Jim found his very first crinoid calyx today, he was very excited. After collecting at *The Place* we all got together at a gas station with a restaurant in it.

Left and Right: The Greatest Fossil ever found. A relatively small crinoid calyx and arms.

Fifeocrinus



I no longer have to burn with envy watching others find these when I wanted one soooooo badly. I sat down, glanced and there it was...mine. my own. *my precious*. Both photos by Dana Jones.



Clockwise from top left: lovely Ammonite found by Roger, who spent a good bit of time working to hammer it out, only to have it land in the drink. Onychocrinus-couldn't be removed. Tiny Trilobite pygidium. Camptocrinus-also unremovable. Cephalopod and coral (bottom). Blastoid and Periwinkle (according to Remy)Pterotocrinus, property of Gabe. Middle, the Periwinkle (now I can't remember what it really is. All swirly things are Periwinkles. Bah.) Special thanks to Roger's hand and quarter. I owe him a quarter.

ROADTRIP!!!

March 8-10 Park Hill Missouri

March 9

Slabs covered in Drusy Quartz
Field Guide: Betty Marler.
Meet at 9a.m. Rosener's Motor Lodge and Restaurant.
3411 Rosener Rd, Park Hills, MO 63601 | (573)431-4241
The site is 30 -45 minutes away. We may be able to visit more than one site.

March 10

Missouri Mines State Historic Museum 12:00pm
Fee \$4 adult/\$2.50 under 13.

Equipment for the dig: gloves, shovels, pry bars, small rake, hammer and chisel, buckets and possibly a flat bottomed device that can be pulled with a rope for hauling out larger pieces.
Many of the larger/more interesting pieces may be partially buried, plan for some digging. This is an old strip mine area.

Rosener's Motor Lodge and Restaurant has offered us a group rate if we book at least 5 rooms.
Room with full bed: \$33
Room with two queens is \$50 a night.
Reserve at least a week in advance. Tell them you're with NMGMS when you reserve.

Contact Nancy as soon as possible as a head count is needed, also any questions
THEROCKHOUNDLADY@YAHOO.COM
731-689-5336

Applicable sites:
<http://mostateparks.com/park/missouri-mines-state-historic-site>
<http://www.missouribeautiful.com/southeast-missouri-tourism/212-missouri-mines-state-historic-site-park-hills-missouri.html>
<http://www.kcminerals.com/MOmines.htm>
<http://mostateparks.com/page/54985/general-information>
<http://mostateparks.com/map/missouri-mines-state-historic-site>
http://en.wikipedia.org/wiki/Southeast_Missouri_Lead_District



Bead Soup

A place to share knowledge about the lapidary arts.

My Experience with the Hawkins

By Justin Hobart

I first met Bill and Floy after joining NMGMS and attending my first couple of meetings back in the summer of 2011. At that time, I was the “new kid on the block” and even after having attended a few of the meetings I still felt as if I didn’t really know much about anyone in the club other than the obvious – that everyone liked rocks and fossils. However, after several months’ worth of meetings and talking to people, I finally started to at least get somewhat of an idea as to who everyone was and what their interests were with respect to the various aspects of geology, paleontology, and lapidary art.



When I learned that Bill was a faceter, I was instantly intrigued by him. I remember talking to him at one of the meetings last summer about our experiences faceting at William Holland. We told each other who our faceting instructors were – ours were not the same – and compared our trips to the school by seeing if we knew any of the other instructors who were there during the same weeks we were. Between the two of us, I think we may have been able to come up with maybe one or two instructors that we knew.

After having talked for a bit, Bill told me that he had some great facet-grade citrine rough at his house and that he’d be happy to share some with me if I ever wanted to stop by. Seeing as I didn’t have much rough to work with and quartz is the best stone to cut for beginner faceters, it sounded like a pretty great deal to me! A couple of weeks later I found myself in my car with a handful of faceting accessories and on my way to the Hawkins’ home.

I arrived late in the afternoon and Bill met me outside the house. He showed me inside and right away I was blown away at what I was seeing. The house was very large and old, having had to have been built in the ‘20s or earlier. It had an ornate antique wooden stairway in the foyer and matching thresholds leading into the adjacent rooms. Bill then led me to the left into the living room, which was filled with several huge cases of seemingly priceless mineral and fossil specimens and stunning jewelry pieces. It was here where I then met Floy, who began showing me some of the minerals in the cases and spent a good twenty minutes or so telling me the different stories behind each of them.

When I learned that Bill was a faceter, I was instantly intrigued by him. I remember talking to him at one of the meetings last summer about our experiences faceting at William Holland. We told each other who our faceting instructors were – ours were not the same – and compared our trips to the school by seeing if we knew any of the other instructors who were there during the same weeks we were. Between the two of us, I think we may have been able to come up with maybe one or two instructors that we knew.

After having talked for a bit, Bill told me that he had some great facet-grade citrine rough at his house and that he’d be happy to share some with me if I ever wanted to stop by. Seeing as I didn’t have much rough to work with and quartz is the best stone to cut for beginner faceters, it sounded like a pretty great deal to me! A couple of weeks later I found myself in my car with a handful of faceting accessories and on my way to the Hawkins’ home.

I arrived late in the afternoon and Bill met me outside the house. He showed me inside and right away I was blown away at what I was seeing. The house was very large and old, having had to have been built in the ‘20s or earlier. It had an ornate antique wooden stairway in the foyer and matching thresholds leading into the adjacent rooms. Bill then led me to the left into the living room, which was filled with several huge cases of seemingly priceless mineral and fossil specimens and stunning jewelry pieces. It was here where I then met Floy, who began showing me some of the minerals in the cases and spent a good twenty minutes or so telling me the different stories behind each of them.

Next, the duo gave me a brief tour of their beautiful home. We went from room to room and each one had a personality of its own. Downstairs was a quaint kitchen with bright yellow walls and blue glass bottles for decoration.

Upstairs was the Asia-themed guest bedroom along with my favorite room in the house – the craft room, or so I call it. This room was jutting out from the back side of the house and was surrounded by windows on all sides. It was small and cluttered with all kinds of trinkets and tools, but my favorite thing about the room was that this was where Bill practiced faceting. While there, we sat down near his faceting machine and he talked me through some of the techniques he used as a faceter and gave me advice on how to properly clean and store my laps (diamond discs). It was also here where I he told me about his passion for bird-watching and listed several species that he’d seen or heard recently from that very room.

Having been discussing faceting, we then made our way back downstairs and into the dining room, where I was going to look through some of the citrine that Bill had told me about earlier. However, little did I expect for Floy to open a closet door and pull out box-upon-box of gems of all kinds and tell me “Just take whatever you want, we need to get rid of this stuff anyway!”. Needless to say, I was like a kid in a candy store at this point! I was able to find several facet-grade garnets along with tourmaline, topaz, amethyst, and of course citrine. Bill seemed especially interested in some of the garnets we had picked through and made sure I took some home with me.

As if giving me beautiful facet rough wasn’t enough, the Hawkins then invited me to stay for dinner. Floy cooked us a delicious pot-roast meal and the couple told me all about their family in California and several of the places they visited and things they’ve seen throughout the years. It was an absolute pleasure to be able to spend that kind of time with them and to get to know them on that kind of level.



Rockheads

PRESIDENTIAL STATEMENT

The next meeting we will be taking an indoor field trip to the Oren Dunn Museum. This will count towards one of the badge requirements. Hope to see you there

MATTHEW LAMBERT



www.amfed.org/fra/fra_badge.htm



Using a GPS to Locate a Geocache

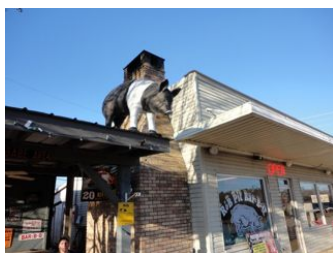
by VICTORIA LANGFORD

I learned how to use a GPS with Jim and Nancy Roberts. I went to the Old Tree the second destination we went to at N35 03.383 and W88 14.164 and that's where I found a little lightning bolt. Then we went to the Pig On The Roof and the coordinates were N35 02.794 and W88 15.367 but we never found that one. Then we went to View of Belle the coordinates were N35 03.277 and W88 14.032 and we never found anything either. Then we went to the last place we had to go to. It was A New Deal, the coordinates were N35 03.337 and W88 13.888 and we found a little box with a troll, pencil, shell, quartz crystal, fern fossil, and a brachiopod. And then we were done with the GPS, we had gone to all the destinations and we were all done.

Our Geocache Trip

by ROBIN LANGFORD

On February 2nd, 2013, Robin, Victoria, Cheryle, Robert, Nancy, and Jim went geocaching in Pickwick, TN. The first site was called View of the Belle. When we had just arrived at the first site we had forgotten to bring something to put back into the container. So we searched through our pockets for things to put into the container. When we got to the coordinates, we could not find the box. So we went to a new place called Old Tree. When we found it we signed the paper and took the prize which was a lightning bolt charm. The next place we went to was Pig On The Roof. It has a pig statue on the roof. It was a newly placed geocache. When we got to the place it was not there. So Cheryle emptied a tic-tac bottle, put in a piece of paper and put the bottle where the geocache should have been. The last place we went to was A New Deal, which was the place that Matthew and Brittani found in December.



Rockhead Officers
President
 Matthew Lambert
Vice President
 Robin Langford
Secretary
 Remy Collins
Field Trip Organizer
 Brittany Lambert

SAFETY FIRST ON FIELD TRIPS

Outdoor adventures go hand in hand with dangers. Whether walking by the lake looking for fossils or strolling through the woods enjoying the flora and fauna. Here are some quick tips to remember on any adventure.

- Carry a first aid kit and cell phone.
- If you must go out alone be sure to tell others where you're going and how long you will be gone.
- Know the area you're going to. Getting lost isn't fun for you or your family.
- Take along a walking stick; it's great for balance and turning over rocks.
- Wear safety glasses when chipping away at rock and stones.
- Watch out for spiders and other harmful insects. They like to hide in dark spaces so be sure to keep your hands out of holes.

Keep these tips in mind and most important – be safe and have fun!

By David Lloyd

Youth Advisors
 Jim Roberts
Latergator2003@yahoo.com
 Dana Jones
bertiewooster13@gmail.com
 David Lloyd

Meeting Program



At our last meeting Nancy taught wire wrapping quartz, Dr Panhorst presented Twinning.

NMGMS will be setting up a display table for this event. We will be highlighting Matthew Lambert's fossil otolith study, based on the Blue Springs collection.

10th Annual Museum of Natural Science Fossil Road Show!

Saturday, 2nd March, 2013 10 AM to 3 PM

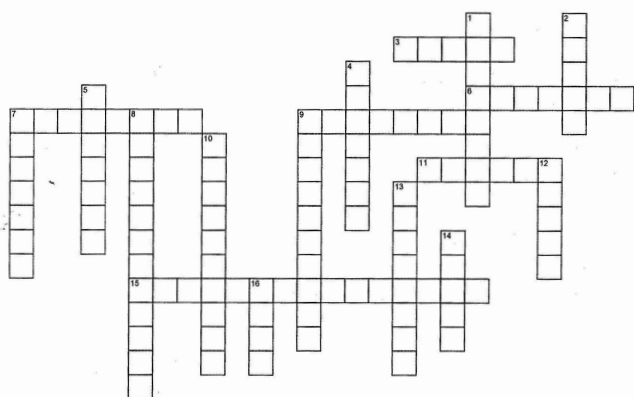
I'd like to invite everyone interested to come help us celebrate the 10th anniversary of the MMNS Fossil Road Show here at the Museum of Natural Science in Jackson. We would appreciate your devoted or even casual professional (and/or avocational) participation. If you've been involved in previous shows, then you know the drill; if you've never attended a show, then please let me know your level of interest in participating. If you come as a visitor, that's great! But if you would like to participate by either setting up a personalized display and/or information table to promote your organization and interact with the public, or if you'd simply like to show off some of your recent fossil discoveries, we'd love that even more!

Whatever your level of interest, professional, novice, or simply curious, we hope to see you there!

George E. Phillips
Paleontology Curator
Conservation & Biodiversity Section
Mississippi Museum of Natural Science
Mississippi Dept. Wildlife, Fisheries & Parks
2148 Riverside Drive
Jackson, Mississippi 39202-1353
(601) 576-6035 - Office [Apologies, voice mail is not available.]
(601) 576-6041 - Lab
(601) 672-9606 - Mobile



Gems and Minerals



ACROSS	
3	a unit of mass equal to 200 mg and is used for measuring gemstones and pearls.
6	derived from the French "esmeraude" and the Greek root "smaragdus"
7	Apache tears
9	the purple variety of quartz and the most valued member of the quartz family
11	the extraction of valuable minerals or other geological materials from the earth,
15	A measure of the amount light is bent
DOWN	
1	making gemstones into gems
2	November birthstone
4	flaw
5	a girl's best friend
7	mined on St John's island
8	formed when molten magma cools
9	used as a lucky talisman and is a popular stone for gamblers
10	light blue variety of beryl
12	Iowa state rock
13	9 on MOH scale
14	a fine-grained silica-rich microcrystalline, cryptocrystalline or microfibrinous sedimentary rock that may contain small fossils.
16	Bituminous



NORTH MISSISSIPPI GEM AND MINERAL SOCIETY

Application for Membership:

Name: _____

Address: _____

\$12 year Individual {}

\$20 year Family {}

Home _____

Cell _____

Email: _____

Family Membership Information:

Spouse: _____

Children: _____

Interests:

minerals____ fossils____ field trips____ beading____ cabbing____

faceting____ wire wrapping____ glass____ soldering____ chain making____

other _____

Talents, field of expertise, or hobbies: _____

Sign: _____

Date: _____

**Affiliated with the Southeast Federation
of Mineralogical Societies, Inc.**

Mail to:

NMGMS

attn. Treasurer

P.O. Box 1445

Tupelo, MS 38802

Make checks payable to:
NMGMS (North Mississippi Gem
and Mineral Society)

Treasurer:

Date pd _____

cash _____ check# _____

amt. _____